

NL10MF

Standard Compressor

R134a

220-240V 50/60Hz

Data Sheet

General

Compressor	NL10MF
Code number	105G6885
Code number	105G6886
Code number compressor with oil cooler	105G6887

Application

Application		MBP
Evaporating temperature range	°C	50Hz: -20*/-12 to 10 60Hz: -25 to 7.2
Voltage range	V/Hz	187 - 254 /50 198 - 254 /60
Motor type		50Hz: RSIR 50/60Hz: CSIR
Max. ambient temperature	°C	43
Comp. cooling at ambient temp.	32°C	O/F ₁
	38°C	O/F ₁ (F ₂ *)
	43°C	O/F ₁ (F ₂ *)

* F₂ for 230-240V 50Hz nominal below -12°C evaporating temperature

Design

Displacement	cm ³	10.10
Oil quantity	cm ³	320
Maximum refrigerant charge	g	600
Free gas vol. in compressor	cm ³	2360
Weight without electrical equipment	kg	10.5

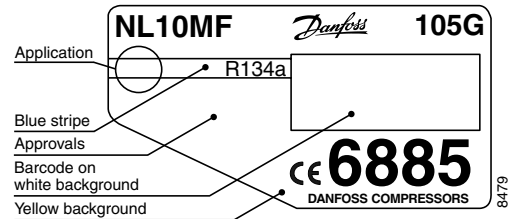
Motor

Motor size	watt	320
LRA (rated after 4 sec. UL984) LST/HST	A	13.1/16.1
Cut-in current LST/HST	A	17.1/16.1
Resistance, main and start winding (25°C)	Ω	6.1/17.5
Approvals		EN 60335-2-34

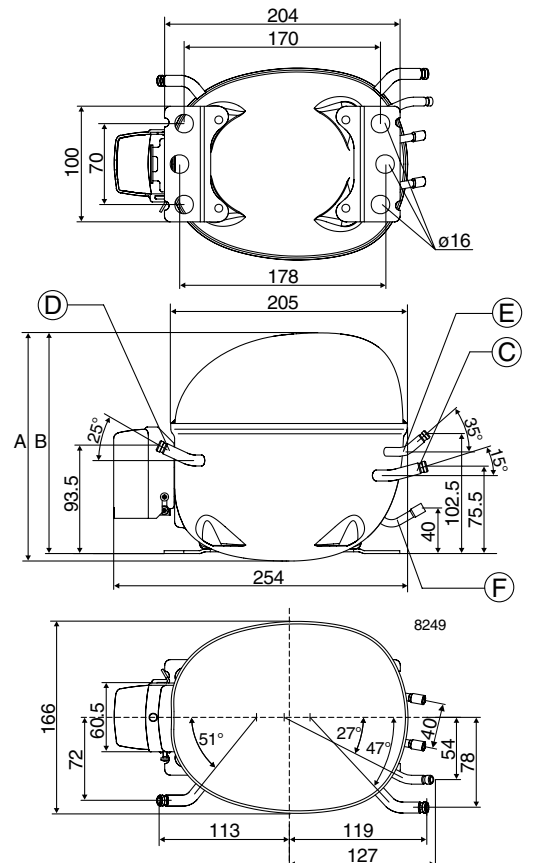
Dimensions

105G6885/87 105G6886

Height	mm	A	203
		B	197
Suction connector	location/I.D. mm	C	8.2 ±0.09
Process connector	location/I.D. mm	D	6.2 ±0.09
Discharge connector	location/I.D. mm	E	6.2 ±0.09
Oil cooler	location/I.D. mm	F	6.2 ±0.09
Compressors on a pallet	pcs.		80



- S = Static cooling normally sufficient
- O = Oil cooling
- F₁ = Fan cooling 1.5 m/s
(compressor compartment temperature equal to ambient temperature)
- F₂ = Fan cooling 3.0 m/s necessary



Capacity (EN 12900/CECOMAF)

watt

Evap. temp. in °C	-25	-20	-15	-10	-6.7	-5	0	5	7.2	10
NL10MF, 50Hz		268*	343*	439	513	555	692	850	926	1028
NL10MF, 60Hz	226	306	405	523	610	659	813	986	1068	

Capacity (ASHRAE)

watt

Evap. temp. in °C	-25	-20	-15	-10	-6.7	-5	0	5	7.2	10
NL10MF, 50Hz		330*	422*	540	631	683	851	1046	1139	1264
NL10MF, 60Hz	278	377	498	643	750	811	1000	1213	1314	

Power consumption

watt

Evap. temp. in °C	-25	-20	-15	-10	-6.7	-5	0	5	7.2	10
NL10MF, 50Hz		252*	286*	323	346	359	396	435	452	475
NL10MF, 60Hz	235	279	326	377	413	432	490	552	581	

Current consumption

A

Evap. temp. in °C	-25	-20	-15	-10	-6.7	-5	0	5	7.2	10
NL10MF, 50Hz		2.02*	2.11*	2.21	2.29	2.33	2.45	2.59	2.66	2.75
NL10MF, 60Hz	1.64	1.79	1.97	2.17	2.32	2.40	2.65	2.93	3.07	

COP (EN 12900/CECOMAF)

W/W

Evap. temp. in °C	-25	-20	-15	-10	-6.7	-5	0	5	7.2	10
NL10MF, 50Hz		1.06*	1.21*	1.36	1.48	1.54	1.74	1.94	2.04	2.16
NL10MF, 60Hz	0.95	1.10	1.25	1.39	1.48	1.53	1.66	1.78	1.84	

COP (ASHRAE)

W/W

Evap. temp. in °C	-25	-20	-15	-10	-6.7	-5	0	5	7.2	10
NL10MF, 50Hz		1.30*	1.49*	1.67	1.82	1.89	2.14	2.39	2.51	2.66
NL10MF, 60Hz	1.17	1.35	1.54	1.71	1.82	1.88	2.04	2.19	2.26	

Test conditions EN 12900/CECOMAF ASHRAE
 Condensing temperature 55°C 55°C
 Ambient and suction gas temp. 32°C 32°C
 Liquid temperature 55°C 32°C
 50Hz: Fan cooling F₂, 220V
 60Hz: Fan cooling F₁, 220V
 * F₂ for 230-240V 50Hz nominal below -12°C evaporating temperature preliminary data

Accessories

Devices	Fig.	NL10MF
PTC starting device 6.3 mm spades 4.8 mm spades	a1	103N0011 103N0018
Starting relay	a2	117U6022
Cover	b	103N2010
Starting capacitor 125 µF	c	117U5018
Cord relief	d	103N1010
Protection screen for PTC	g	103N0476
Mounting accessories		
Bolt joint for one compressor		118-1917
Bolt joint in quantities		118-1918
Snap-on in quantities		118-1919

